
Indianapolis-Marion County Public Library Construction Highlights December 2005

PROJECT SCHEDULE UPDATE



Aerial View of Central Library Construction Site

As of December 2005, construction crews had completed most of the steel erection for the tower addition and the Atrium.

And, by the end of November 2005, decking and concrete for the first five floors was in place.

During the next several months, construction crews will complete the steel work to connect the existing building to the new addition, and insert the frames for the escalators, elevators, glass walls, and ceiling for the Atrium.

Indianapolis-Marion County Public Library Construction Highlights December 2005

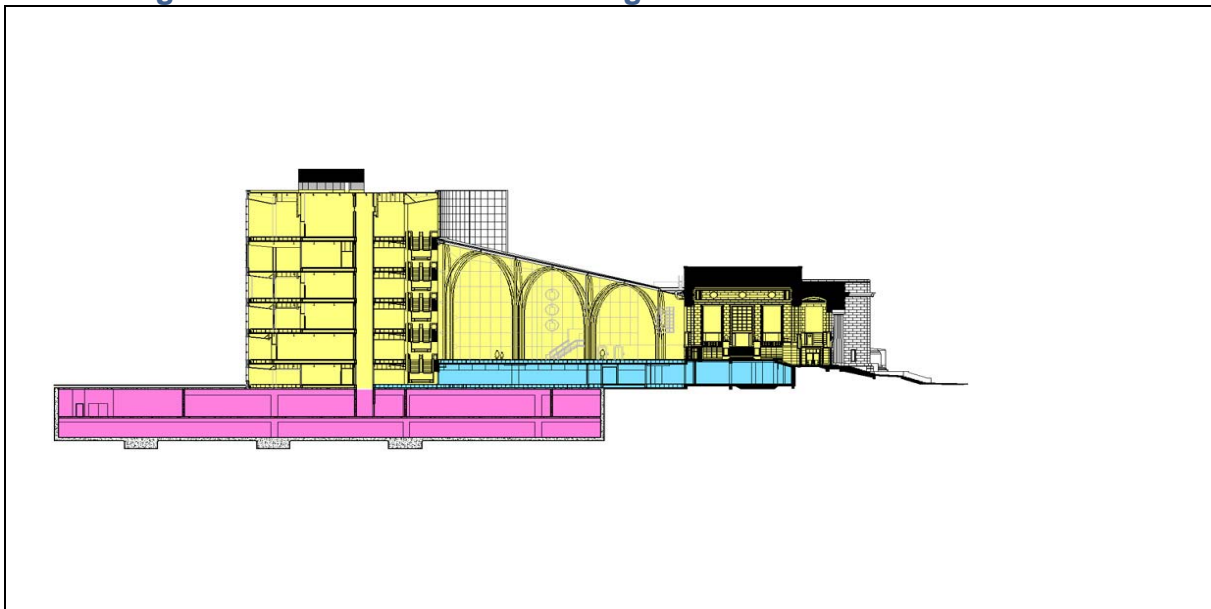
ARCHES FOR THE NEW ATRIUM SPACE

If you have driven past the construction site recently, you may have noticed a series of tall steel arches.



View of the Atrium Arches from Cret Building

These arches are located in the new Atrium – a six-story glass enclosed space connecting the historic 1917 Cret building to the new tower.



Cross Section of Tower, Atrium, and Cret Building

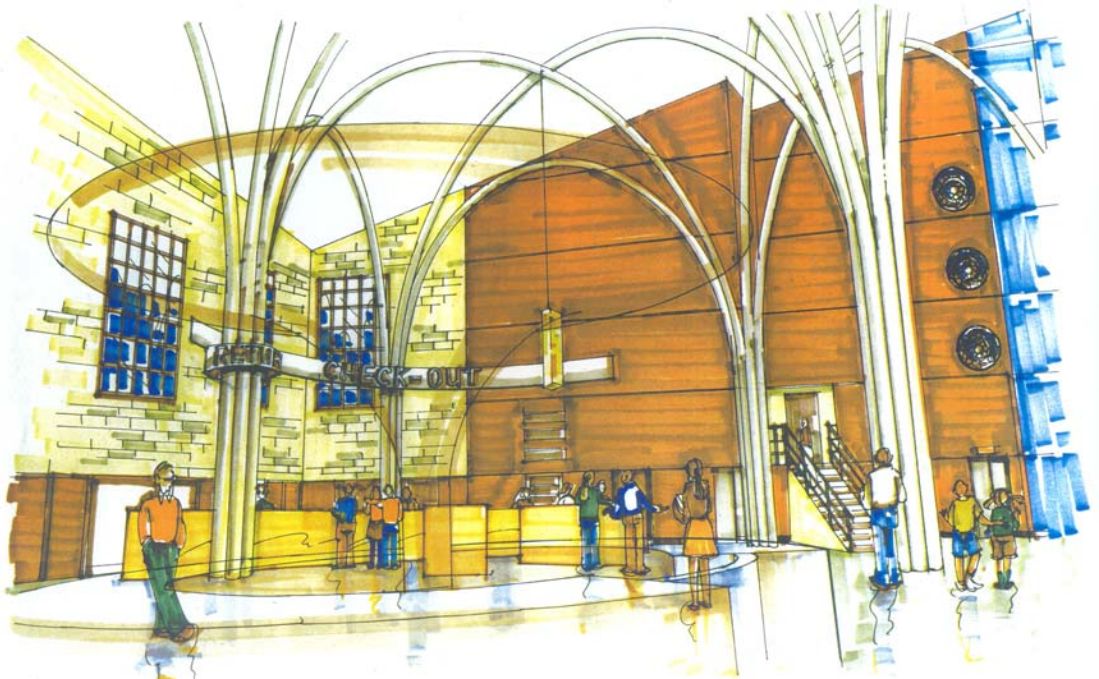
Indianapolis-Marion County Public Library Construction Highlights December 2005



Steel Framing for Atrium Skylight Glass

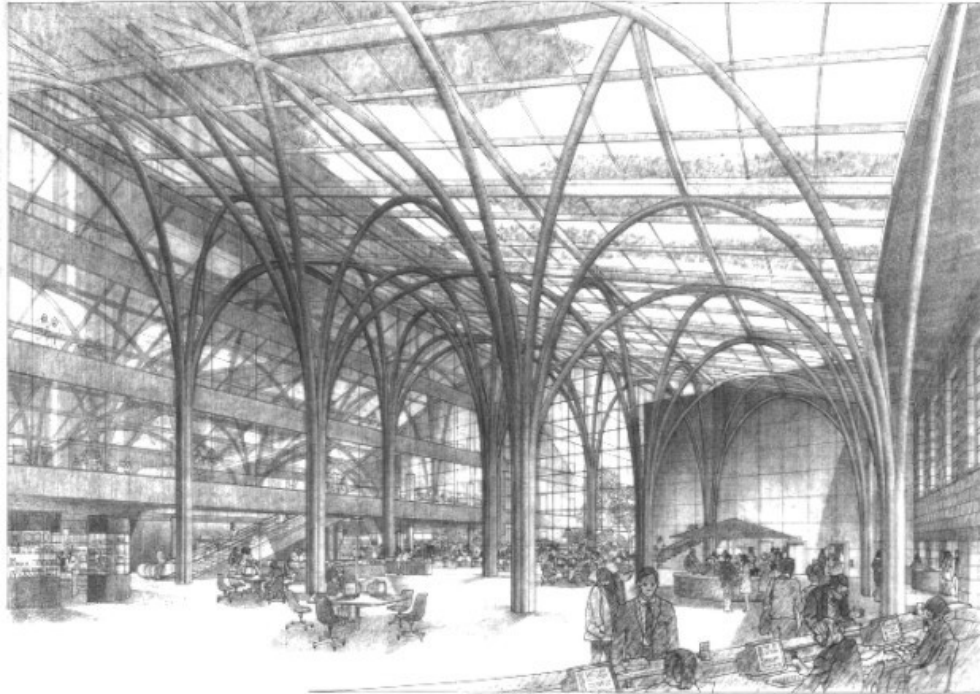
Indianapolis-Marion County Public Library Construction Highlights December 2005

The Atrium will serve as the hub of the Central Library building. The Information and Circulation Desks, Automated Catalogues, Exhibition Area, and Café will be located here.



Artist Rendition of Information and Circulation Desks

Indianapolis-Marion County Public Library Construction Highlights December 2005



Woollen, Molzan and Partners

Artist Rendition of the Atrium

From the Atrium, patrons will be able to access The Learning Curve @ Central and other parts of the building.

Indianapolis-Marion County Public Library Construction Highlights December 2005

RENOVATIONS IN THE CRET BUILDING

Inside the 1917 historic Cret Building, interior renovations and reconstructions including a new mechanical and electrical system, carpeting, wall finishes, lighting fixtures, and glass replacements were substantially completed.



Renovated Simon Reading Room

Indianapolis-Marion County Public Library Construction Highlights December 2005



Restored chandeliers in Simon Reading Room

Indianapolis-Marion County Public Library Construction Highlights December 2005



Renovated Mezzanine with Reconstructed Small Chandeliers

The remaining work, which includes connecting the building with the new addition; completing the installation of carpeting and ceiling tiles; and finishing the mechanical and plumbing work, is dependent upon the completion of the Atrium and the new addition.



Reconstructed South Steps

Indianapolis-Marion County Public Library Construction Highlights December 2005

GARAGE REPAIR WORK PROGRESS

The Library hired [Structural Preservation Group \(SPG\)](http://www.structural.net), www.structural.net, a nationally known contractor specializing in structural repairs, to implement the concrete repair work in the underground parking garage. Critical path beam/column repairs for the erection of the tower steel were completed in the spring, making it possible to begin steel erection. Other repairs to the garage continue to progress while construction work is taking place above the garage foundation.



Garage Beam Repair

As of January 1, 2006, Hunt Construction and Smoot Construction, LLC, a joint venture, will officially take over the management of the construction site. The Hunt-Smoot team has been working with the Central project management team since November 2005 to ensure a smooth transition for the construction management services for the project.

Indianapolis-Marion County Public Library Construction Highlights December 2005

MAN-MATERIALS LIFT TO BE USED

In the upcoming months, a man-materials lift will be constructed on the east side of the tower addition for the next phase of the construction project. The lift will be used to provide access to the floors while the glass curtain wall is being installed on the tower addition.



**Man-Material Lift Used During Renovation of Fletcher Building
in Downtown Indianapolis**

Indianapolis-Marion County Public Library Construction Highlights December 2005

CENTRAL QUICK FACTS

Did you know that approximately 4,020,000 pounds or 8,000 pieces of structural steel will be used to build the Tower addition and connecting Atrium space?



After the steel was erected, crews installed decking materials and poured concrete for the floors.

Crews Level Newly Poured Concrete Floor

Fireproofing materials are currently being applied to the structural steel beams.



Concrete for the floors and fireproofing for the tower is expected to be completed early next year. Crews will begin to install a roof on the structure while work continues on the exterior of the building.